

### Native IP Device

Speakers connect to your IP network. Simple to install and easily configured with a Web browser

### Power over Ethernet

Single cable deployment. Onboard Audio amplifier delivering up to 10W of power with IEEE803.3af

### Prioritised Audio

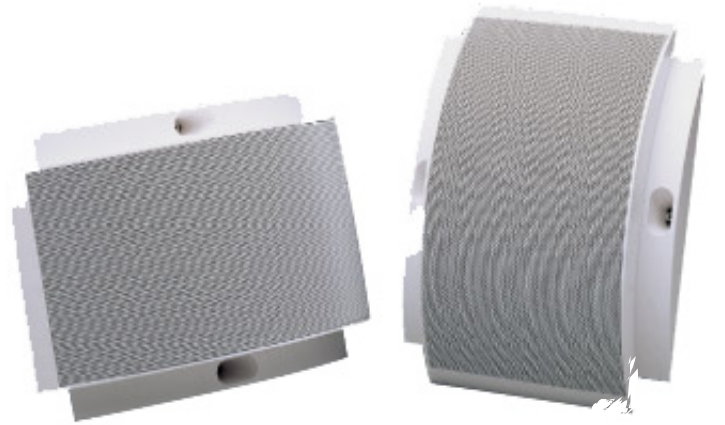
The ASP7205-IP supports up to 9 levels of priority for audio announcements for selective muting.

### Flex I/O

Features 4 Flex Inputs and 4 Flex Outputs. Each Flex I/O is configurable via the browser interface, providing flexible configuration options for attached I/O.

### IP Integration

Netgenium's PolicyServer provides automated announcements along with seamless integration with Cisco Skinny and SIP IP Telephony and Milestone Xprotect Smart Client.



### ASP7205-IP

Deploy an audio PA system over an IP Network with Netgenium IP Speakers and make paging announcements via an IP Telephone system or PC.

The IP Speaker offers interoperability between Cisco Call Manager for Audio announcements using G.711 audio, and the ability to 'pipe' background music from a multicast audio source.

Integrate speakers with Netgenium's PolicyServer and NGx consoles applications and make targeted paging announcements to an individual or group of individuals within a specific 'Zone' in your building.

By utilising Power over Ethernet, the speaker is easy to deploy and manage. Features such as mute and volume are controlled via software.



### Technical Data

**Model No:**  
ASP7205-IP

**Connectivity:**  
1 No. 10/100 Base TX Ethernet RJ45 Socket

<b>Electrical</b>	
Effective frequency range, Hz (BSEN60268-5)	160 – 18,000
S.P.L. @ 1m, 1 watt, dB, Test Signal Bandwidth 100Hz-10 kHz S.P.L.	96
@ Full power Octave Bandwidth, dB	104
Acoustic Power (dB-PWL@1 watt) 1 k/2kHz, dB	94/95
Dispersion at 1k/2k Hz, Degrees	180/120
Directivity Axial Q factor, 1 k/2kHz	3.6.5.8

**Supported Codecs:**  
G711 uLaw ,G711 ALaw, PCM  
Wav 11.025 Khz, Wav 22.05 Khz, Wav 44.1 Khz, Wav 48 Khz

**Onboard I/O:**  
No 4 Flex Inputs (Requires Digital 0v contact)  
No 4 Flex Outputs (12V switched –ve)  
Flex I/O is presented internally. Can be used for local announcements, IP events and PolicyServer control

**Power Supply:**  
Power over Ethernet IEEE802.3af  
Max Power Output 10W (with IEEE802.3af supply)

<b>Mechanical</b>	
Dimensions, height, front and depth, mm	330 x 240 x 90
Net weight, Kgs	1.15
Colour/Finish	White
Material	ABS moulding with UV inhibitors Steel mesh
Mounting	Keyhole and/or screws

