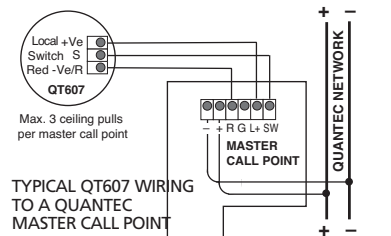


QT607 Quantec Ceiling / Wall Pull

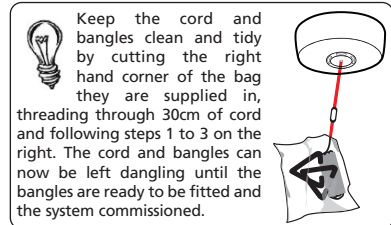
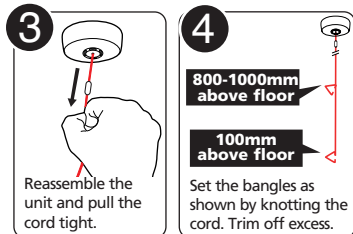
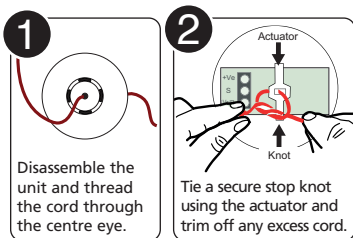


Max. 3 ceiling pulls per master call point

TYPICAL QT607 WIRING TO A QUANTEC MASTER CALL POINT

For more detailed wiring information refer to the instructions supplied with the master call point. Always assess the construction of the mounting surface before installation and fix the QT607 to a ceiling or wall using suitable screw fixings.

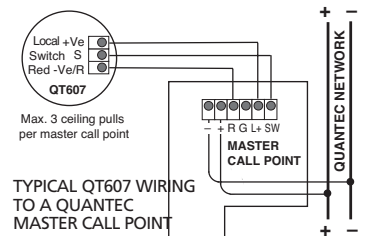
Tie the pull cord and its bangles to the ceiling / wall pull as detailed below:



Ceiling / wall pulls ARE NOT recommended for applications where there is a risk of ligature (e.g. mental health facilities). In such applications we recommend the use of alternative devices such as tamper-resistant call points. Contact your distributor for details.

DNU6020012 Rev 4

QT607 Quantec Ceiling / Wall Pull

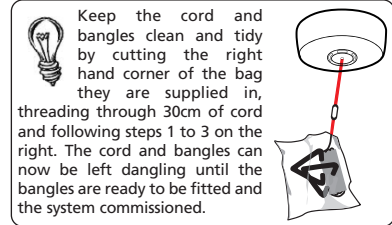
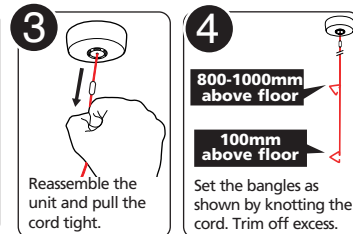
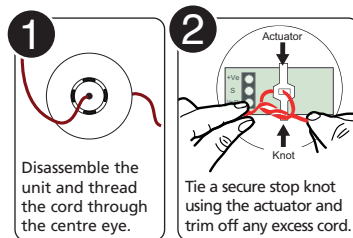


Max. 3 ceiling pulls per master call point

TYPICAL QT607 WIRING TO A QUANTEC MASTER CALL POINT

For more detailed wiring information refer to the instructions supplied with the master call point. Always assess the construction of the mounting surface before installation and fix the QT607 to a ceiling or wall using suitable screw fixings.

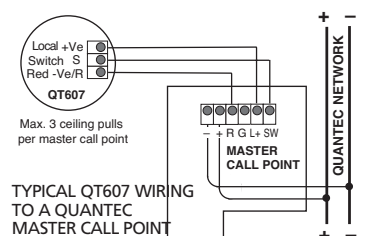
Tie the pull cord and its bangles to the ceiling / wall pull as detailed below:



Ceiling / wall pulls ARE NOT recommended for applications where there is a risk of ligature (e.g. mental health facilities). In such applications we recommend the use of alternative devices such as tamper-resistant call points. Contact your distributor for details.

DNU6020012 Rev 4

QT607 Quantec Ceiling / Wall Pull

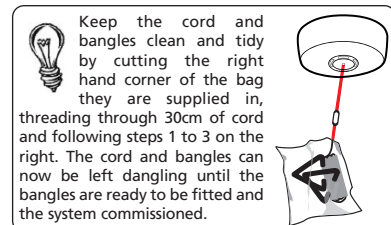
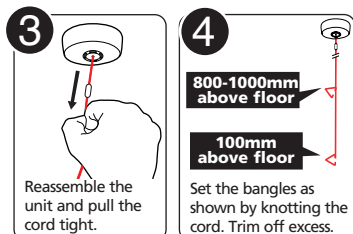
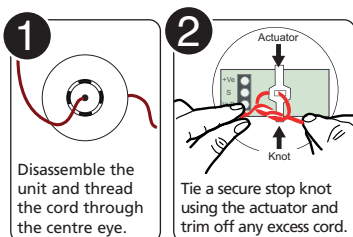


Max. 3 ceiling pulls per master call point

TYPICAL QT607 WIRING TO A QUANTEC MASTER CALL POINT

For more detailed wiring information refer to the instructions supplied with the master call point. Always assess the construction of the mounting surface before installation and fix the QT607 to a ceiling or wall using suitable screw fixings.

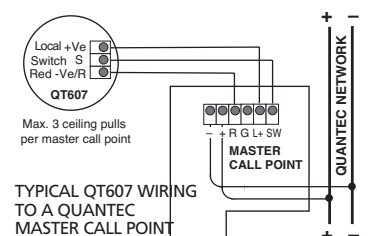
Tie the pull cord and its bangles to the ceiling / wall pull as detailed below:



Ceiling / wall pulls ARE NOT recommended for applications where there is a risk of ligature (e.g. mental health facilities). In such applications we recommend the use of alternative devices such as tamper-resistant call points. Contact your distributor for details.

DNU6020012 Rev 4

QT607 Quantec Ceiling / Wall Pull

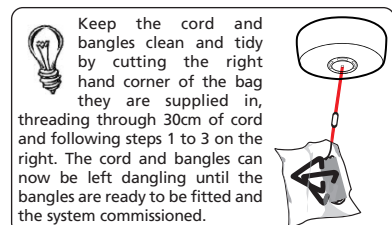
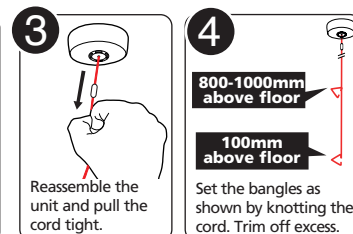
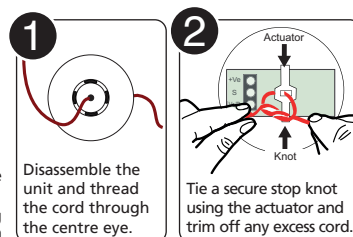


Max. 3 ceiling pulls per master call point

TYPICAL QT607 WIRING TO A QUANTEC MASTER CALL POINT

For more detailed wiring information refer to the instructions supplied with the master call point. Always assess the construction of the mounting surface before installation and fix the QT607 to a ceiling or wall using suitable screw fixings.

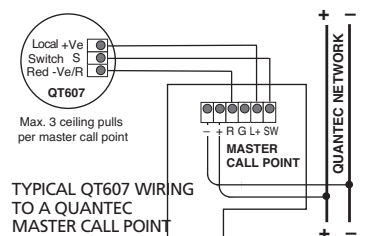
Tie the pull cord and its bangles to the ceiling / wall pull as detailed below:



Ceiling / wall pulls ARE NOT recommended for applications where there is a risk of ligature (e.g. mental health facilities). In such applications we recommend the use of alternative devices such as tamper-resistant call points. Contact your distributor for details.

DNU6020012 Rev 4

QT607 Quantec Ceiling / Wall Pull

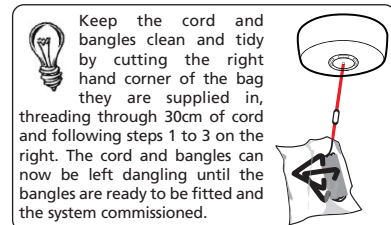
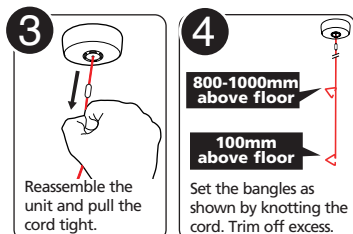
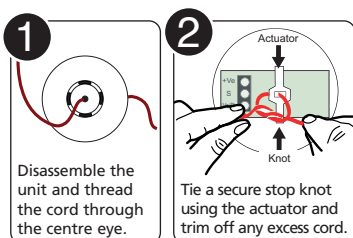


Max. 3 ceiling pulls per master call point

TYPICAL QT607 WIRING TO A QUANTEC MASTER CALL POINT

For more detailed wiring information refer to the instructions supplied with the master call point. Always assess the construction of the mounting surface before installation and fix the QT607 to a ceiling or wall using suitable screw fixings.

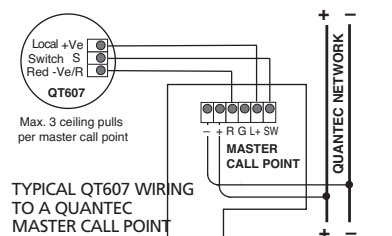
Tie the pull cord and its bangles to the ceiling / wall pull as detailed below:



Ceiling / wall pulls ARE NOT recommended for applications where there is a risk of ligature (e.g. mental health facilities). In such applications we recommend the use of alternative devices such as tamper-resistant call points. Contact your distributor for details.

DNU6020012 Rev 4

QT607 Quantec Ceiling / Wall Pull

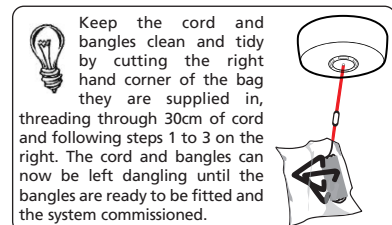
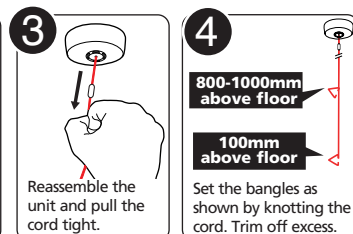
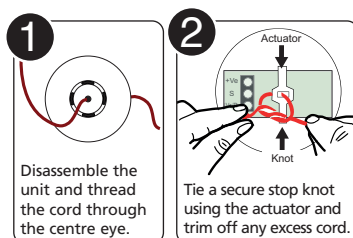


Max. 3 ceiling pulls per master call point

TYPICAL QT607 WIRING TO A QUANTEC MASTER CALL POINT

For more detailed wiring information refer to the instructions supplied with the master call point. Always assess the construction of the mounting surface before installation and fix the QT607 to a ceiling or wall using suitable screw fixings.

Tie the pull cord and its bangles to the ceiling / wall pull as detailed below:



Ceiling / wall pulls ARE NOT recommended for applications where there is a risk of ligature (e.g. mental health facilities). In such applications we recommend the use of alternative devices such as tamper-resistant call points. Contact your distributor for details.

DNU6020012 Rev 4